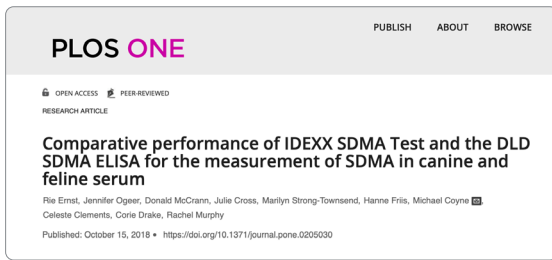
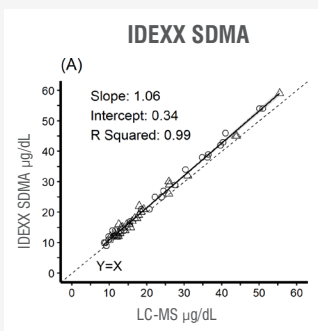


A peer-reviewed article compared the accuracy of two reference laboratory tests for SDMA and IDEXX's was more accurate¹

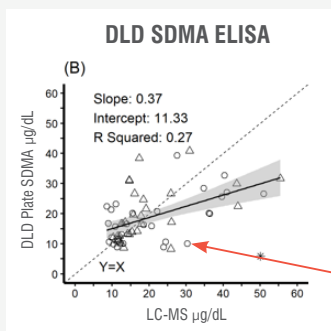


IDEXX SDMA at IDEXX Reference Laboratories
versus
DLD SDMA ELISA at Laboklin's reference laboratory

The comparison to LC-MS gold-standard showed excellent accuracy for IDEXX SDMA and superior analytical performance than the DLD SDMA ELISA



Excellent correlation
to gold-standard ($R^2=0.99$)



Poor correlation
to gold-standard ($R^2=0.27$)

Figure 2 (from the publication)

IDEXX SDMA showed excellent correlation with gold-standard ($R^2=0.99$) with results tightly clustered to truth ($X=Y$). DLD SDMA ELISA showed poor correlation with gold-standard ($R^2=0.27$) with results scattered around truth ($X=Y$), demonstrating inaccuracy.

E.g., for the same sample, DLD SDMA ELISA result: $10\mu\text{g/dL}$ (meaning within reference interval), while reference method: $30\mu\text{g/dL}$ (meaning kidney disease likely)

Species: ○ Canine △ Feline

When the same sample is analyzed day-by-day, DLD SDMA ELISA showed clinically relevant inconsistency

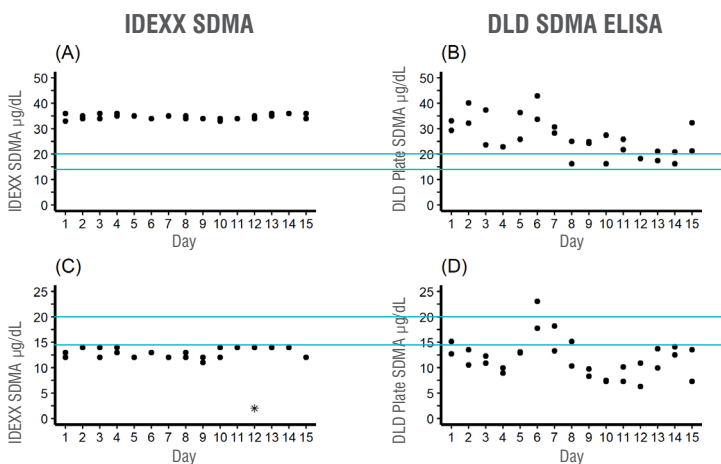


Figure 3 from the publication (reference lines added)

If results are compared with the lines added for the reference interval ($<14\mu\text{g/dL}$) and the threshold from the SDMA algorithm ($\geq 20\mu\text{g/dL}$):

- IDEXX SDMA give the same interpretation each day
- DLD SDMA interpretation varies from day to day

Not all SDMA assays are the same!

Make sure you get an accurate and precise diagnostic SDMA test for your patients. IDEXX offers a veterinary-specific SDMA that is cost-effective, rapid and accurate.

¹ Ernst R, Ogeer J, McCraan D, Cross J. Comparative performance of IDEXX SDMA Test and the DLD SDMA ELISA for the measurement of SDMA in canine and feline serum. Plos One October 15, 2018

